

Craft Food Products

Countless Opportunities for Printed Solutions



Roll Labels



Roll Labels are great for labeling small batch sauces, canned goods, candies, and oils.

Choose from:

Standard Papers:

- White Gloss
- White Matte
- Recycled White Gloss
- Yellow Gloss

Fluorescent Papers:

- Green
- Yellow
- Red
- Orange
- Pink

Foil Papers:

- Silver
- Gold

White matte or fluorescent materials must be used when writing on labels.

Popular Roll Label Sizes

	Size Across the Roll	Size Around the Roll	Price Group
Circles	3	3	A
	3 ½	3 ½	B
	4	4	B
Ovals	3	4	B
	3	5	B
Rectangles	2 ½	3	A
	2	4	A
	2 ½	3	A
	2 ½	3 ½	A
	3	6	C
	4	5	C
	4	3	B
	4	3 ½	B
	4	178	A

Specialty Roll Labels



Foil Stamping is available in red, blue, green, gold, and silver.



Brown kraft paper is used when a natural look of paper is desired. The unique color and texture of this unbleached material is a great choice for product labeling.



Synthetic BOPP Roll Labels are tough, waterproof, non-toxic, and resist most acids found in foods, as well as some chemicals and oils.

Choose from:

No. 5600 Specialty Papers

- White gloss with removable adhesive
- White gloss with freezer grade adhesive
- Opaque white gloss with permanent adhesive
- Brown kraft paper with permanent adhesive (4CP not available)

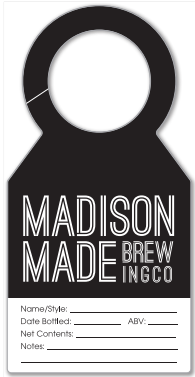
No. 5925 Polypropylene

- Clear BOPP with permanent adhesive
- White BOPP with permanent adhesive

Popular Roll Label Sizes

	Size Across the Roll	Size Around the Roll	Price Group
Circles	3	3	B
	3 ½	3 ½	C
	4	4	C
Ovals	3	4	C
	3	5	C
	1 ½	4	A
Rectangles	2	4	B
	2 ½	3	B
	2 ½	3 ½	B
	2	3	A
	3 ½	2	A
	4	3	C
	4	3 ½	C
4	1 ½	A	

Bottle Tags



2 1/4" x 4 1/2"
No. 1481 Tag Stock
No. 1488 Plastic



2 1/8" x 5 3/8"
No. 1482 Tag Stock
No. 1489 Plastic



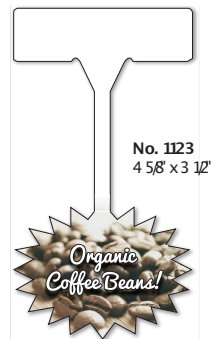
2 1/4" x 7"
No. 1485 Tag Stock
No. 1491 Plastic

Bottle Tags are great for:

- Growlers
- Olive Oils
- Craft Beers
- Sauces
- Wines



Shelf Talkers



Shelf Talkers are 4-color process printed on gloss white plastic approximately .010" thick. The construction is designed to fit snap-in grooves on the edge of store shelves.

Overall dimensions are approximately 4 5/8" x 8 1/2".



Rectangle Boxes

Rectangle Boxes have a variety of applications in the craft food market. The paperboard material is safe for indirect food contact (food should be wrapped). Packages of dip mixes or spice blends attract more attention on store shelves when packaged in cartons with eye-catching graphics.



No-Glue Boxes



Versatile roll end cartons or **No-Glue Boxes** are economical, easy to assemble and load, and work well for medium to heavy weight products. The paperboard material is safe for indirect food contact (food should be wrapped).

Beverage Boxes

4 Packs



No. 83806 4-pack 12 oz Can Boxes (AB)
5.19" x 5.19" x 4.85"

Material

18 pt. White C IS Wet Strength Paperboard

- Recycled paperboard designed to meet the demands of cold and wet environments. It's also recyclable.
- Printed side is white, opposite side is kraft brown (unbleached).
- Coated with a gloss aqueous coating. Matte coating available upon request.



No. 83809 4-pack 16 oz Can Boxes (AB)
5.25" x 5.25" x 6.25"



No. 83807 4-pack 12 oz Slim Can Boxes (AB)
6.25" x 4.6" x 4.6"



No. 83805 4-pack 12 oz Slim Can Boxes (POSE)
6.25" x 4.6" x 4.6"

How to decide?

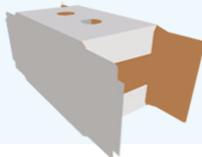
Auto-Bottom (AB) Beverage Boxes work well for manual can packing at craft breweries that do not have automatic filling operations.

Partial Overlap Seal End (POSE) boxes are the most economical option for larger breweries with canning lines and gluing machines.

Partial Overlap Seal End (POSE)

Has openings on both sides so that cans can be filled from either side.

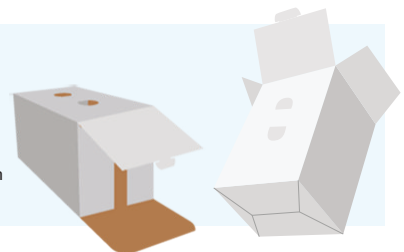
Must be glued after loading the product.



Auto-Bottom (AB)

Opens from one side that has a locking tab for easy filling.

Comes pre-glued, snaps in to place when unfolded.



Beverage Boxes

6 Packs



No. 83812 6-pack 12 oz Can Boxes (POSE)
7.78" x 4.8133" x 5.095"



No. 83814 6-pack 12 oz Can Boxes (AB)
7.75" x 5.188" x 4.875"

12 Pack



No. 83821 12-pack 12 oz Slim Can Boxes (POSE)
8.875" x 6.625" x 6.188"

Material

18 pt. White C.I.S Wet Strength Paperboard

- Recycled paperboard designed to meet the demands of cold and wet environments. It's also recyclable.
- Printed side is white, opposite side is kraft brown (unbleached).
- Coated with a gloss aqueous coating. Matte coating available upon request.

Contact us for custom pack sizes.

Canopy Tents



Premium Tent Specs

5 Adjustable Heights

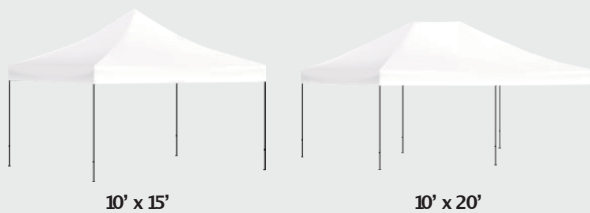
Total Height	Head Clearance
126.75"	70.75"
129.875"	73.875"
133"	77"
136.125"	80.125"
139.25"	83.25"

Contact us for specs on **standard tent** dimensions and height adjustments.



Easy-to-assemble **Canopy Tents** feature professional grade 600 denier polyester tops. Premium anodized aluminum frame with 175" hexagon legs shown.

A **10' x 10'** Canopy Tent is shown above. Larger tent sizes are available:



A set of **Canopy Weight Bags** helps keep your canopy grounded on hard surfaces and in inclement weather.

Canopy Tents come with a **FREE Roller Bag**.





Teardrop Flag
X-Stand Base

Feather Flag
Ground-Spike Base



Flag stand options:

X-Stand Base

Ground-Spike Base

Contact us for pricing if a Canopy Flag Mount is needed.

Table Covers

8 ft. Fitted



8 ft. Throw



6 ft. Stretch-Fit



Choose from either 6 ft or 8 ft, and Fitted, Throw or Stretch-Fit Table Covers.

Back and Side Walls

All canopies come equipped with corner to corner velcro on all valances, so your back walls are easy to hang. Side walls come with the proper hardware to attach it firmly to the frame.

Back Wall
Comes in 3 sizes
10' x 7' | 15' x 7' | 20' x 7'



Side Wall
10' x 3.2'



4-Color Process Decals

Static materials work great on cooler doors in retail stores. **White vinyl** and **clear polyester** are suitable for outdoor use.



Custom Shapes and Sizes

Overlamination is available. Specify gloss or matte on orders. If not specified, gloss overlamination will be used.

Material Key

No. 49902	White Vinyl
No. 49903	Clear Polyester (Face Adhesive)
No. 49904	Clear Polyester (Back Adhesive)
No. 49907	White Static
No. 49908	Clear Static (Face Application)
No. 49909	Clear Static (Back Application)
No. 49911	Clear Removable (Face Adhesive)
No. 49912	Clear Removable (Back Adhesive)
No. 49913	White Removable